

# the SHEILA KIRSTEN HUGHES Band

## BOOKING & INFO

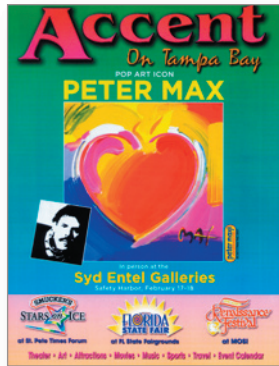
Chris Hughes  
 Nubzilla Records  
 813-760-1829  
 booking@skhughes.com  
 info@skhughes.com



Sheila Kirsten Hughes Band is a member of the 2008-2010 Florida State Touring Roster and is a two-time recipient of the Artist Enhancement Grant from the Florida Department of State, Division of Cultural Affairs.

## ARTICLE *accent on tampa bay*

The Tampa Bay area's largest Bi-monthly Arts, Entertainment and Sports publication



January/February 2007 issue, page 13.

MUSIC TRAX

Accent Spotlights . . .

the

## SHEILA KIRSTEN HUGHES Band

**T**he Sheila Kirsten Hughes Band is a husband/wife team comprised of songwriter Sheila Kirsten Hughes on vocals, guitar, piano, cello, and violin, and sound engineer Chris Hughes on double bass, electric bass, percussion, sequences, and keyboards. The pair met 12 years ago when they literally collided while extreme skating in Downtown St. Petersburg.

Sheila's early performances at open mics were received with great critical acclaim. Word of her ability spread quickly throughout Tampa's independent artist community, and she became a staple of the music scene. Her talent drew a broad range of comparisons from Jewel to Janis Joplin.

In 2002, Sheila stumbled upon the Soul City Café website – a program for independent artists created by recording artist Jewel. Sheila, a web-savvy graphic designer, and Chris immediately went to work developing Nubzilla's Café – a website to promote artists in and around the Tampa Bay area – as part of their newly formed independent record label, Nubzilla Records. Soul City Café began featuring the works of many of the Nubzilla Café's featured artists on their site.

Though Soul City Café did not survive more than a year beyond its inception, Nubzilla's Café carried on the torch and has since expanded its territory by featuring artists from across the United States.

The duo's new CD, Perspectives, was released recently with a show at the Tampa Bay Performing Arts Center. All of the songs were fully produced and performed by Chris and Sheila in their live-in studio, with special guest guitarist Tomi on several tunes. Their goal was to create an album full of dramatic tension and emotional triumph. The result is a rich blend of ambient, soulful, jazz-tinged rock.

Though still in the early stages, the band is developing an innovative show for an '07 tour that will allow them to bring the full, epic sound of Perspectives to the stage, but with only the two of them performing. The two-piece band creates an empowering wall of sound as their organic and electric instruments collide with technology.

For more information on The Sheila Kirsten Hughes Band, visit [www.nubzilla.com](http://www.nubzilla.com).

NEW RELEASES

Off The Beaten Path

Compiled by Roland Stone

JAZZ

**TURNED TO BLUE** is a classic representation of NANCY WILSON showcasing the full spectrum of her 50 years of singing. She delivers a story through ballads, premieres unparalleled treatments of new songs and swings with a big band on this CD for everyone. (MCG Jazz - [www.mcjazz.com](http://www.mcjazz.com))

**SNAPPY HOUR** is a culmination of SNAPDADDY'S' collective experience as consummate session players for such artists as Madonna, Frank Sinatra, and Celine Dion, as well as individually on motion picture scores. This music has a fresh eclectic twist by using unique instrumental combinations. (Refined Records - [www.refinedrecords.com](http://www.refinedrecords.com))

More than just a jazz artist, **CHUCK LOEB** is a versatile composer, arranger and producer in a wide range of musical styles. The expert guitarist's new album, **PRESENCE**, celebrates the importance of the human element in the creative process. (Heads Up - [www.headsup.com](http://www.headsup.com))

**TONY DeSARE'S** new release **LAST FIRST KISS** combines the charismatic singer/pianist's distinctive songwriting with some originals and a selection of pop classics. The modern young crooner puts his own jazzy spin on some familiar tunes. (Telarc - [www.telarc.com](http://www.telarc.com))

**GYPSY SCHAEFFER'S** new release, **PORTAMENTAL**, demonstrates further evolution of the quartet's forward-looking musical vision and innovative approach to